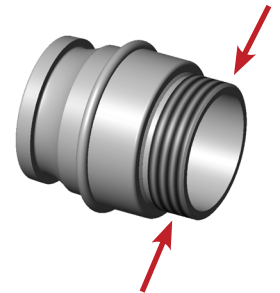
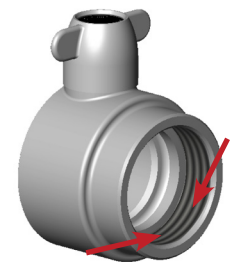


Nominal Bore		Number of threads per inch	Major Diameter (OD of Male)		Minor Diameter (ID of Female)	
inch	mm		inch	mm	inch	mm
1/16"		28	0.304	7.723	0.2583	6.561
1/8"		28	0.383	9.728	0.3372	8.566
1/4"		19	0.518	13.157	0.4506	11.445
3/8"		19	0.656	16.662	0.5886	14.950
1/2"		14	0.825	20.955	0.7336	18.631
5/8"		14	0.902	22.911	0.8106	20.587
3/4"		14	1.041	26.441	0.9496	24.117
7/8"		14	1.189	30.201	1.0976	27.877
<hr/>						
<b>1"</b>	<b>25mm</b>	<b>11</b>	<b>1.309</b>	<b>33.249</b>	<b>1.1926</b>	<b>30.291</b>
1 1/8"		11		37.897		34.939
1 1/4"		11	1.650	41.910	1.5336	38.952
<hr/>						
<b>1 1/2"</b>	<b>38mm</b>	<b>11</b>	<b>1.882</b>	<b>47.803</b>	<b>1.7656</b>	<b>44.845</b>
<hr/>						
<b>1 3/4"</b>	<b>45mm</b>	<b>11</b>		<b>53.746</b>	<b>1.9996</b>	<b>50.788</b>
<hr/>						
<b>2"</b>	<b>50mm</b>	<b>11</b>	<b>2.347</b>	<b>59.614</b>	<b>2.2306</b>	<b>56.656</b>
2 1/4"		11		65.710	2.4706	62.752
<hr/>						
<b>2 1/2"</b>	<b>63mm</b>	<b>11</b>	<b>2.960</b>	<b>75.184</b>	<b>2.8436</b>	<b>72.226</b>
2 3/4"		11		81.534	3.0936	78.576
<hr/>						
<b>3"</b>	<b>75mm</b>	<b>11</b>	<b>3.460</b>	<b>87.884</b>	<b>3.3436</b>	<b>84.926</b>
3 1/2"		11		100.330		97.372
<hr/>						
<b>4"</b>	<b>100mm</b>	<b>11</b>	<b>4.450</b>	<b>113.030</b>	<b>4.3336</b>	<b>110.072</b>
<hr/>						
<b>4 1/2"</b>	<b>115mm</b>	<b>11</b>		<b>125.730</b>		<b>122.772</b>
5"		11	5.450	138.430		135.472
5 1/2"		11		151.130		148.172
<hr/>						
<b>6"</b>	<b>150mm</b>	<b>11</b>	<b>6.450</b>	<b>163.830</b>		<b>160.372</b>



**Male Thread**  
Measure **outside** diameter



**Female Thread**  
Measure **inside** diameter

[www.pslfireandsafety.co.nz](http://www.pslfireandsafety.co.nz)

PO Box 69-028 Glendene,  
Auckland 0645, NZ  
+64 9 818 8048



**NOTE:**

BSP = British Standard Pipe  
BSPP = British Standard Pipe Parallel Thread  
BSPT = British Standard Pipe Tapered Thread

